

Field Identification and Control of Suspected Herbicide-Resistant Weeds

HERBICIDE RESISTANCE IS NO LONGER JUST A REGIONAL ISSUE. IT'S A NATIONAL THREAT.

Though herbicide resistance has been an issue in parts of North America for many years, it's growing in severity. Farmers have become accustomed to a very efficient and simple weed management strategy – using a herbicide-resistant trait with the associated herbicide – but managing existing herbicide-resistant weeds or working to prevent the development of new ones requires farmers to consider more complex weed-management strategies. The occurrence of resistance on a farm can increase rapidly and proper identification and confirmation of resistance is imperative to timely mitigation.



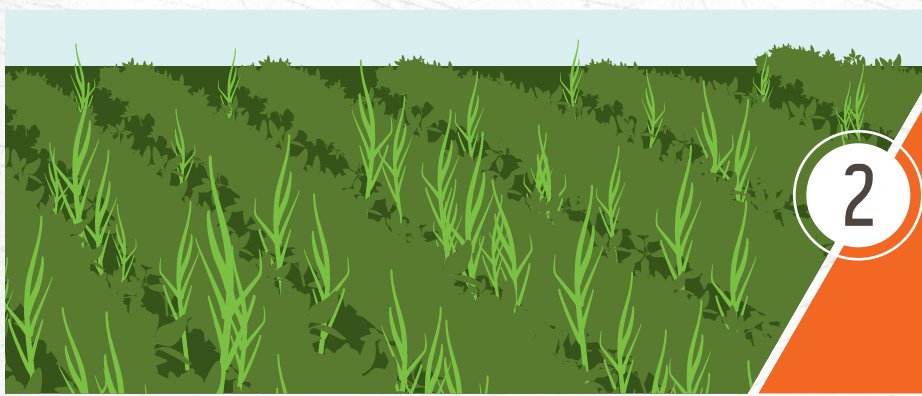
What does resistance look like?

Three indicators of possible herbicide resistance:



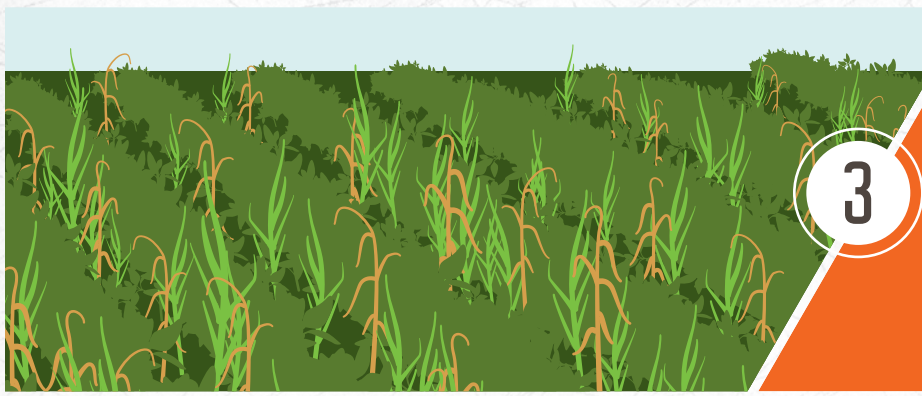
1

A herbicide's failure to control a weed species normally susceptible to the herbicide at the dose applied, especially if control is achieved on adjacent weeds



2

A spreading patch of non-controlled plants of a particular weed species



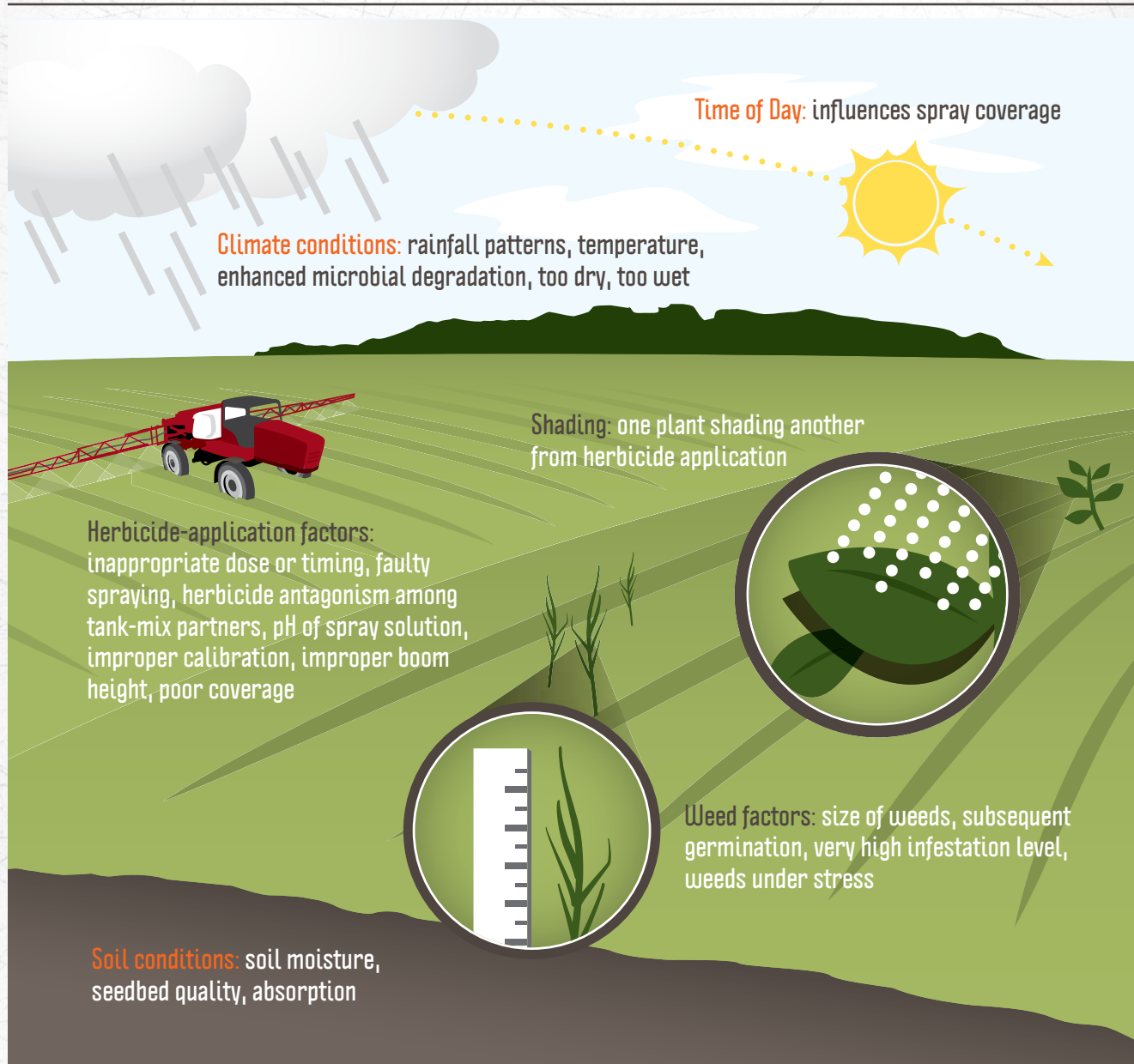
3

Surviving plants mixed with controlled individuals of the same or different species



What causes herbicide failure?

9 out of 10 herbicide failures are due to factors other than resistance.

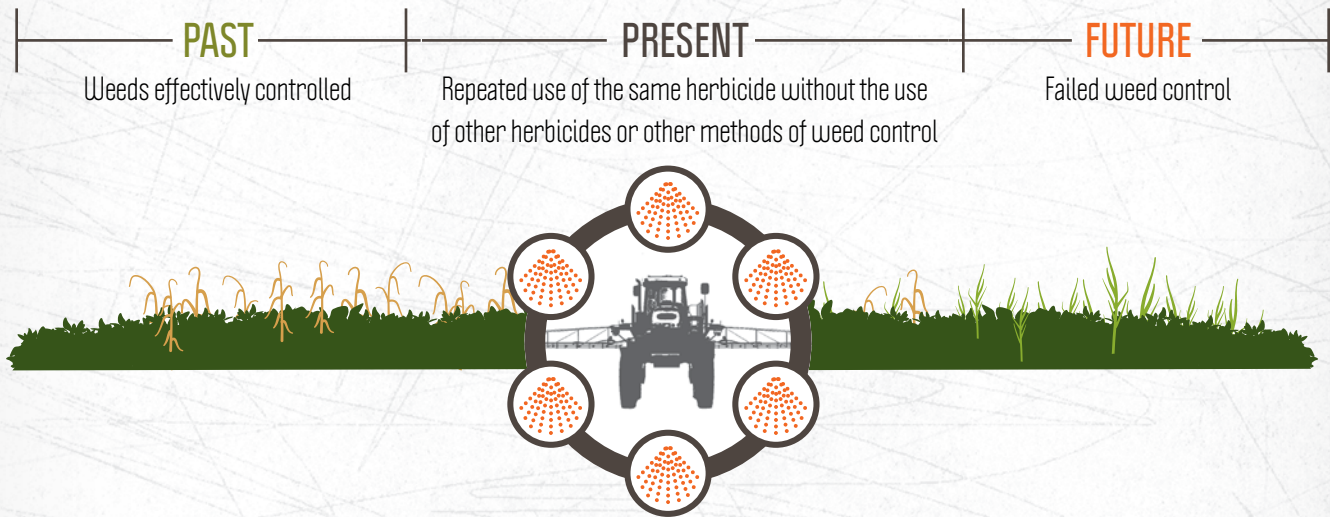


Field Identification and Control of Suspected Herbicide-Resistant Weeds

www.TakeActionOnWeeds.com



How does herbicide resistance occur?



What should be done now if herbicide resistance is suggested?

Scout soon after the initial treatment, and re-treat, if necessary, using a herbicide with a different site of action or a different weed-management practice.



+

Contact your dealer, applicator, extension agent or others for guidance.



+

If weeds are too large, the second application may not be effective. Consider cultivation and hand weeding. Consider destroying the infested area if resistance is extremely isolated.



+

Follow-up during and after harvest. Rotate herbicides and crop next season.



Technical editing for this publication was led by a committee of the Weed Science Society of America (WSSA), and developed with funding from the soy checkoff.

www.TakeActionOnWeeds.com